

# Runway Use Report

Chicago O'Hare International Airport

Period: September 2008

Time of Day: All hours



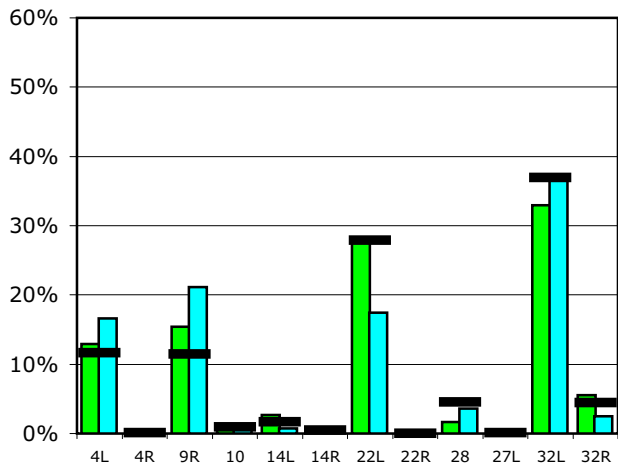
## Runway Use (All hours)

Source: Airport Noise Management System (ANMS)

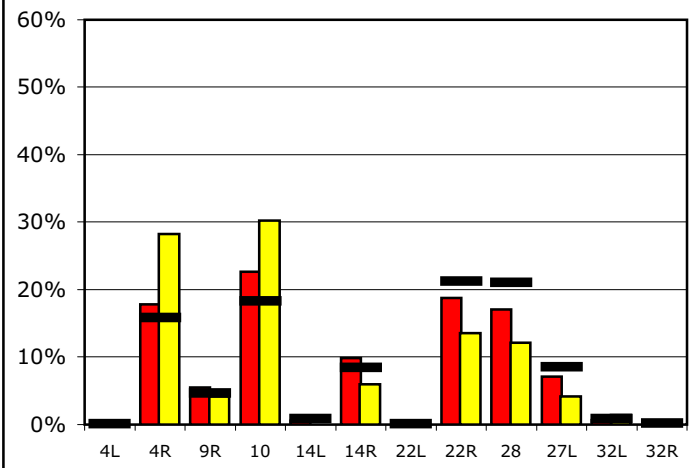
### Runway Utilization

	4L	4R	9R	10	14L	14R	22L	22R	28	27L	32L	32R
<b>Average Daily Departures</b>												
September 2008	147	0	176	8	31	6	315	0	19	0	375	63
August 2008	213	0	272	7	10	4	223	0	46	0	475	32
12 Month Avg.	124	1	123	10	18	5	300	0	48	1	397	48
<b>Average Daily Arrivals</b>												
September 2008	0	212	65	269	7	117	0	224	203	85	8	0
August 2008	0	382	57	409	0	81	1	183	164	57	19	1
12 Month Avg.	1	178	52	205	10	95	1	238	237	96	9	3

### Departures (All hours)

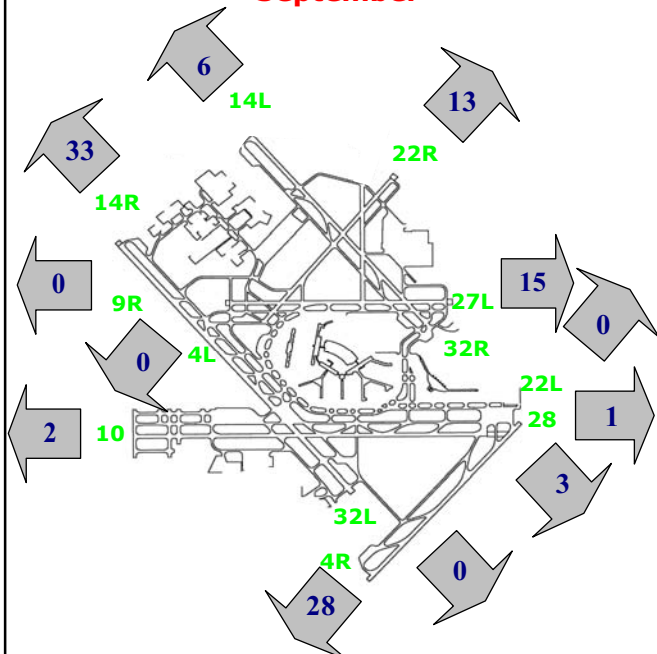


### Arrivals (All hours)



### Percentage Departure Utilization

September



### Percentage Arrival Utilization

September

