

Runway Use Report

Chicago O'Hare International Airport

Period: October 2008

Time of Day: All hours



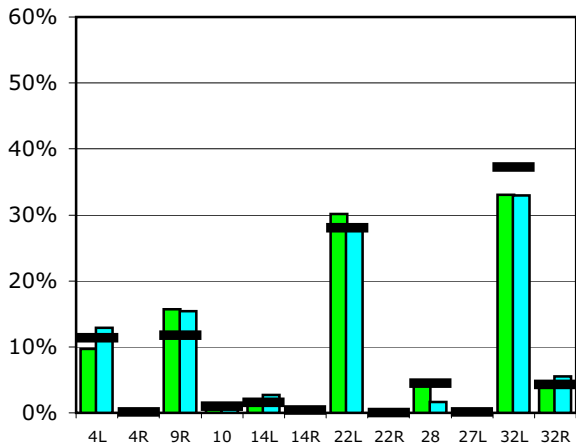
Runway Use (All hours)

Source: Airport Noise Management System (ANMS)

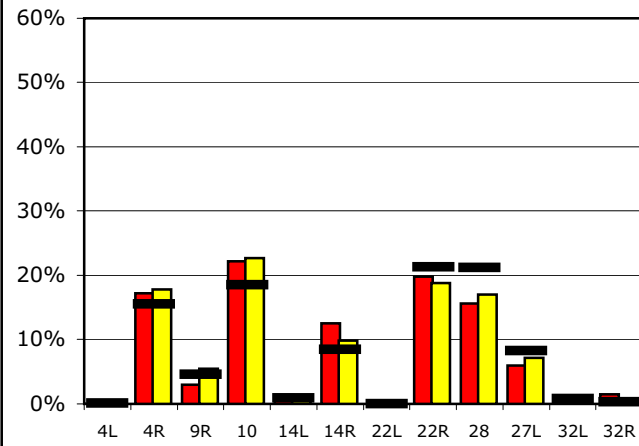
Runway Utilization

	4L	4R	9R	10	14L	14R	22L	22R	28	27L	32L	32R
Average Daily Departures												
October 2008	114	1	185	6	24	4	355	0	52	0	390	47
September 2008	147	0	176	8	31	6	315	0	19	0	375	63
12 Month Avg.	129	1	133	10	18	5	317	0	51	1	421	48
Average Daily Arrivals												
October 2008	0	211	36	273	17	154	0	243	193	74	10	18
September 2008	0	212	65	269	7	117	0	224	203	85	8	0
12 Month Avg.	1	184	54	219	10	101	0	252	251	98	10	4

Departures (All hours)

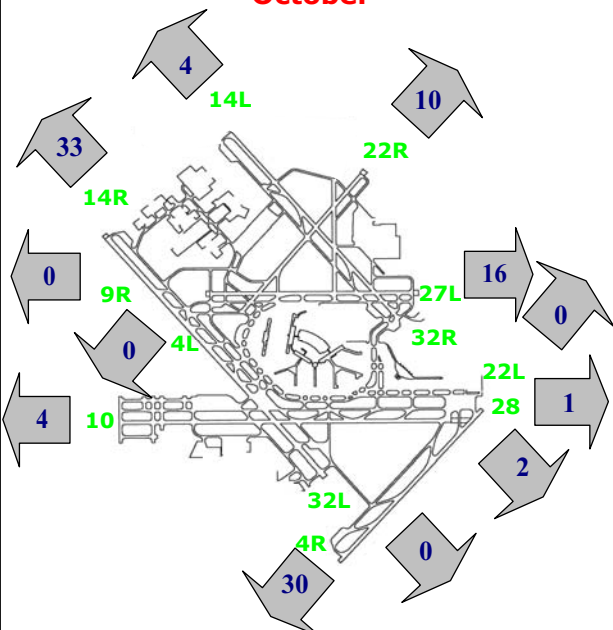


Arrivals (All hours)



Percentage Departure Utilization

October



Percentage Arrival Utilization

October

