

Runway Use Report

Chicago O'Hare International Airport
 Period: October 2008
 Time of Day: 10:00 p.m. to 7:00 a.m.



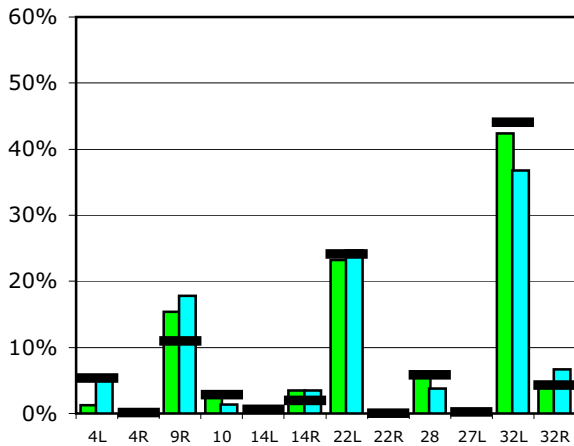
Runway Use (10 p.m. to 7 a.m.)

Source: Airport Noise Management System (ANMS)

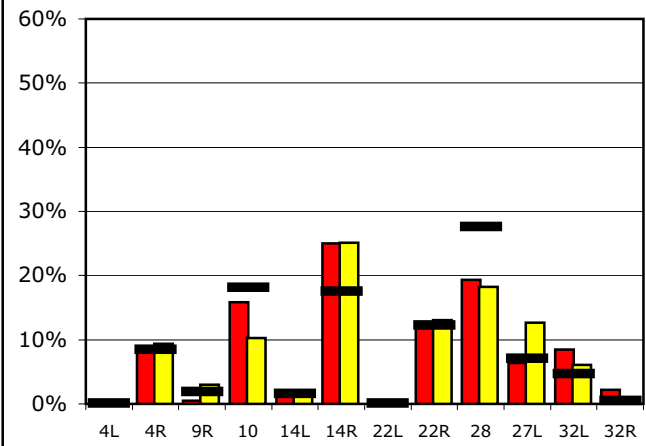
Runway Utilization

| | | 4L | 4R | 9R | 10 | 14L | 14R | 22L | 22R | 28 | 27L | 32L | 32R |
|---------------------------------|---------------------------------------|----|----|----|----|-----|-----|-----|-----|----|-----|-----|-----|
| Average Daily Departures | | | | | | | | | | | | | |
| October 2008 | ■ | 1 | 0 | 15 | 3 | 0 | 3 | 23 | 0 | 6 | 0 | 41 | 5 |
| September 2008 | ■ | 5 | 0 | 17 | 1 | 0 | 3 | 23 | 0 | 4 | 0 | 35 | 6 |
| 12 Month Avg. | ■ | 6 | 0 | 12 | 3 | 1 | 2 | 25 | 0 | 6 | 0 | 46 | 5 |
| Average Daily Arrivals | | | | | | | | | | | | | |
| October 2008 | ■ | 0 | 11 | 1 | 19 | 1 | 30 | 0 | 15 | 24 | 8 | 10 | 3 |
| September 2008 | ■ | 0 | 12 | 4 | 13 | 2 | 31 | 0 | 16 | 22 | 16 | 8 | 0 |
| 12 Month Avg. | ■ | 0 | 11 | 3 | 25 | 2 | 24 | 0 | 16 | 37 | 10 | 6 | 1 |

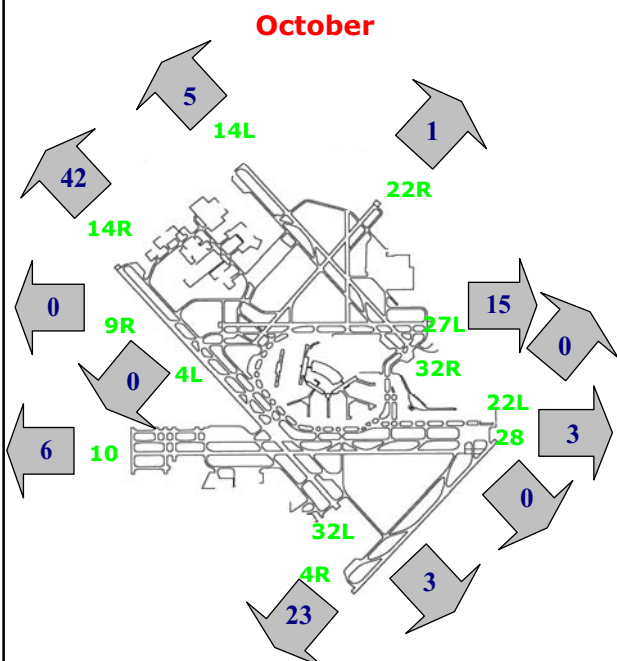
Departures (10 p.m. to 7 a.m.)



Arrivals (10 p.m. to 7 a.m.)



Percentage Departure Utilization



Percentage Arrival Utilization

