

# Runway Use Report

Chicago O'Hare International Airport

Period: November 2008

Time of Day: All hours

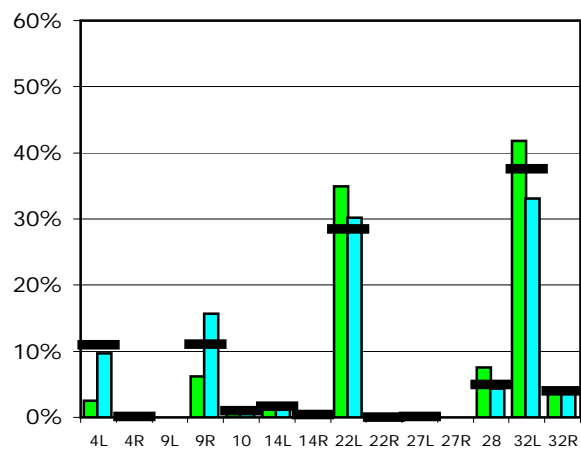


## Runway Use (All hours)

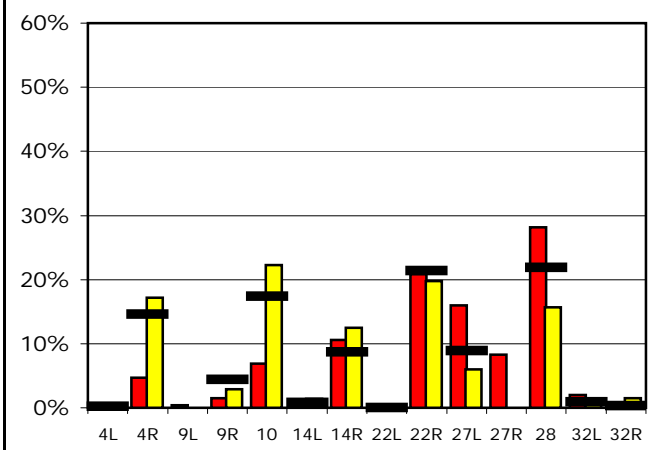
Source: Airport Noise Management System (ANMS)

		Runway Utilization <sup>1</sup>													
		4L	4R	9L	9R	10	14L	14R	22L	22R	27L	27R	28	32L	32R
<b>Average Daily Departures</b>															
<b>November 2008</b>		26	0	0	65	6	22	2	365	0	1	0	79	437	42
October 2008		114	1	n/a	185	6	24	4	355	0	0	n/a	52	390	47
12 Month Avg.		116	1	n/a	117	10	18	4	301	0	1	n/a	52	397	42
<b>Average Daily Arrivals</b>															
<b>November 2008</b>		0	50	5	16	75	8	115	0	227	173	90	305	22	0
October 2008		0	211	n/a	36	273	17	154	0	243	74	n/a	193	10	18
12 Month Avg.		2	162	n/a	49	192	9	96	0	236	98	n/a	241	10	3

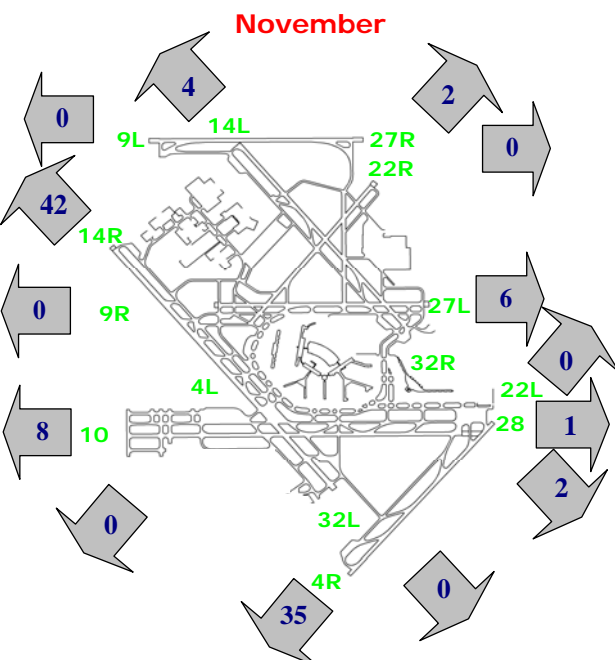
## Departures (All hours)



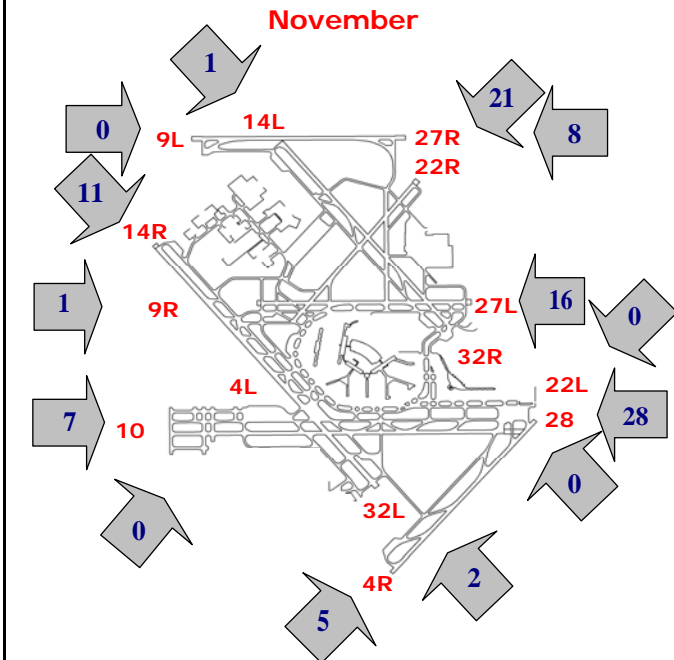
## Arrivals (All hours)



## Percentage Departure Utilization



## Percentage Arrival Utilization



<sup>1</sup> Runway 9L/27R was commissioned on November 20, 2008