

# Runway Use Report

Chicago O'Hare International Airport  
 Period: November 2008  
 Time of Day: 10:00 p.m. to 7:00 a.m.

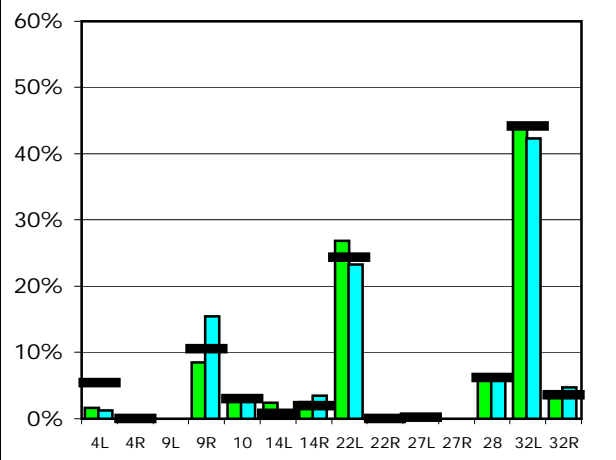


## Runway Use (10 p.m. to 7 a.m.)

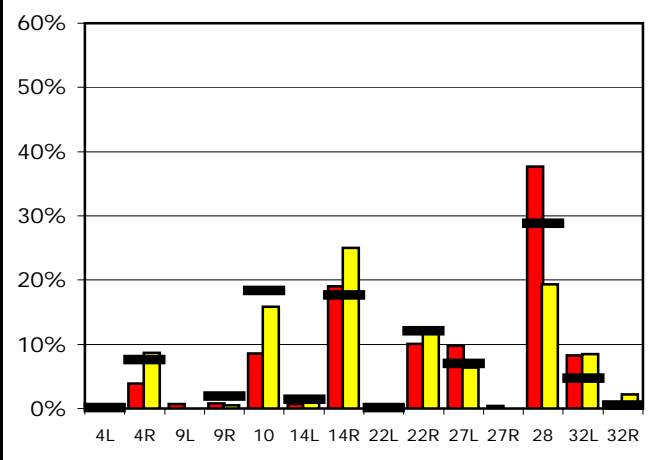
Source: Airport Noise Management System (ANMS)

		Runway Utilization <sup>1</sup>													
		4L	4R	9L	9R	10	14L	14R	22L	22R	27L	27R	28	32L	32R
<b>Average Daily Departures</b>															
November 2008	<span style="color: green;">■</span>	1	0	0	7	3	2	2	22	0	0	0	5	36	3
October 2008	<span style="color: cyan;">■</span>	1	0	n/a	15	3	0	3	23	0	0	n/a	6	41	5
12 Month Avg.	<span style="color: black;">■</span>	5	0	n/a	10	3	1	2	24	0	0	n/a	6	44	4
<b>Average Daily Arrivals</b>															
November 2008	<span style="color: red;">■</span>	0	4	1	1	9	1	20	0	11	10	0	40	9	0
October 2008	<span style="color: yellow;">■</span>	0	11	n/a	1	19	1	30	0	15	8	n/a	24	10	3
12 Month Avg.	<span style="color: black;">■</span>	0	10	n/a	2	23	2	22	0	15	9	n/a	36	6	1

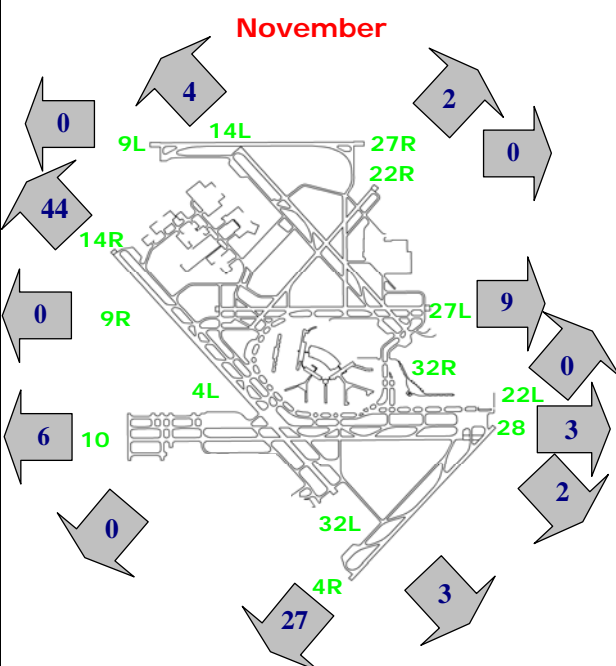
### Departures (10 p.m. to 7 a.m.)



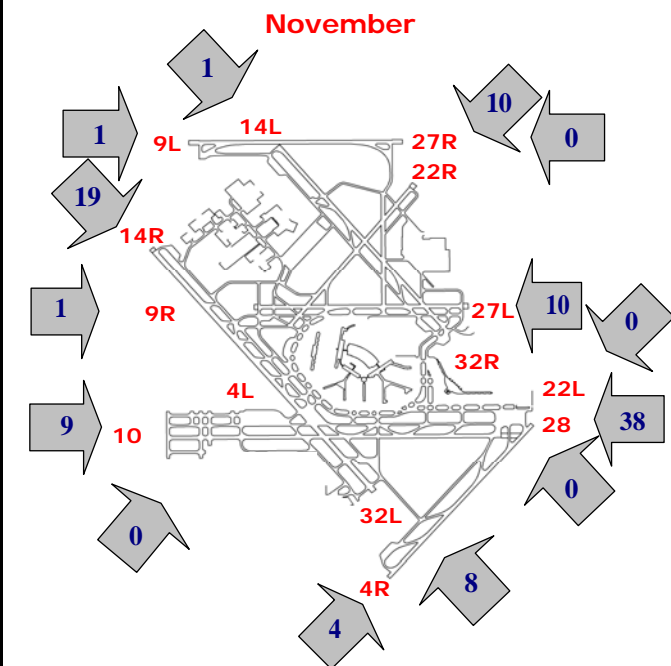
### Arrivals (10 p.m. to 7 a.m.)



### Percentage Departure Utilization



### Percentage Arrival Utilization



<sup>1</sup> Runway 9L/27R was commissioned on November 20, 2008