

# Runway Use Report

Chicago O'Hare International Airport

Period: May 2009

Time of Day: 10:00 p.m. to 7:00 a.m.



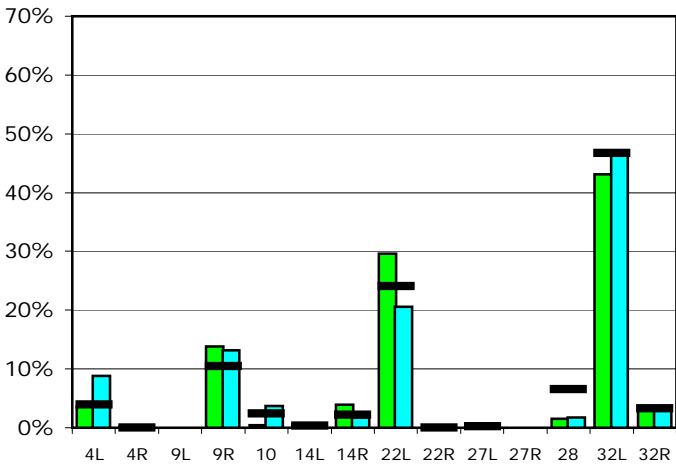
## Runway Use (10 p.m. to 7 a.m.)

Source: Airport Noise Management System (ANMS)

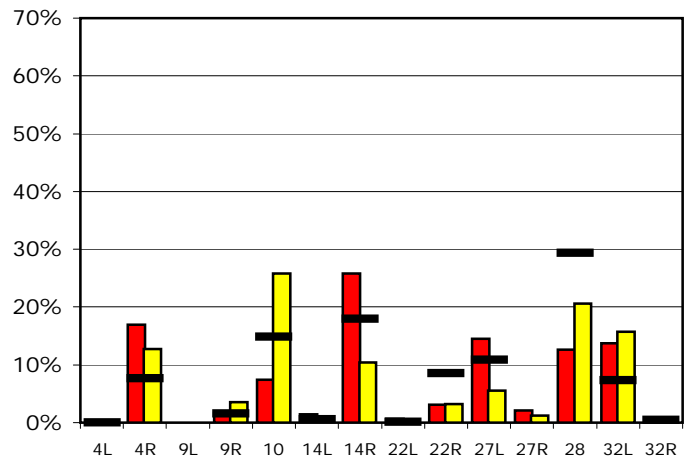
### Runway Utilization<sup>1</sup>

	4L	4R	9L	9R	10	14L	14R	22L	22R	27L	27R	28	32L	32R	
<b>Average Daily Departures</b>															
May 2009	3	0	0	12	0	0	3	25	0	0	0	1	37	3	
April 2009	8	0	0	12	3	0	2	18	0	0	0	2	42	3	
12 Month Avg.	4	0	n/a	10	2	0	2	23	0	0	n/a	6	44	3	
<b>Average Daily Arrivals</b>															
May 2009	0	20	0	2	9	2	31	1	4	17	3	15	16	0	
April 2009	0	16	0	4	32	1	13	0	4	7	1	26	20	0	
12 Month Avg.	0	9	n/a	2	18	1	22	0	10	13	n/a	36	9	0	

### Departures (10 p.m. to 7 a.m.)

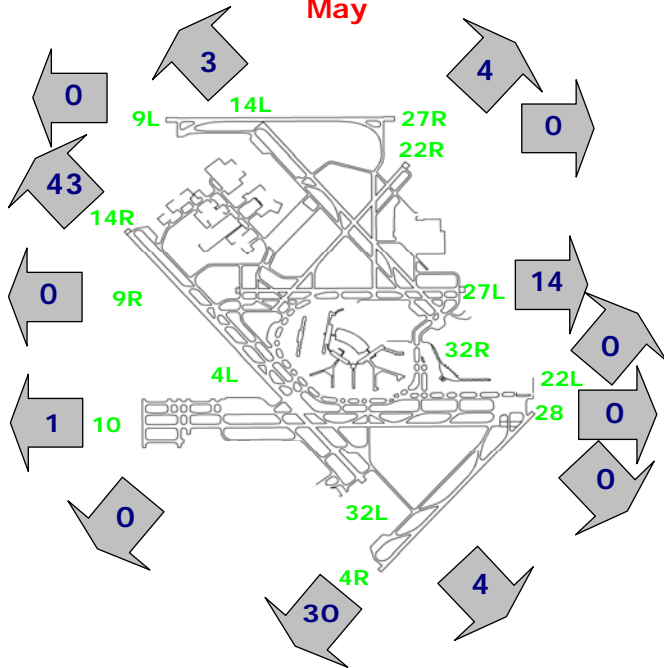


### Arrivals (10 p.m. to 7 a.m.)



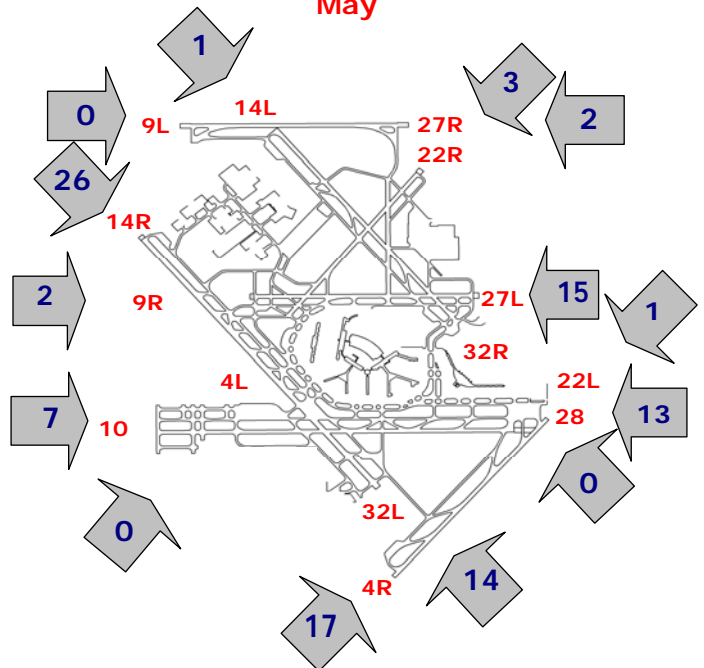
### Percentage Departure Utilization

May



### Percentage Arrival Utilization

May



<sup>1</sup> Runway 9L/27R was commissioned on November 20, 2008