

Runway Use Report

Chicago O'Hare International Airport

Period: May 2008

Time of Day: 10:00 p.m. to 7:00 a.m.



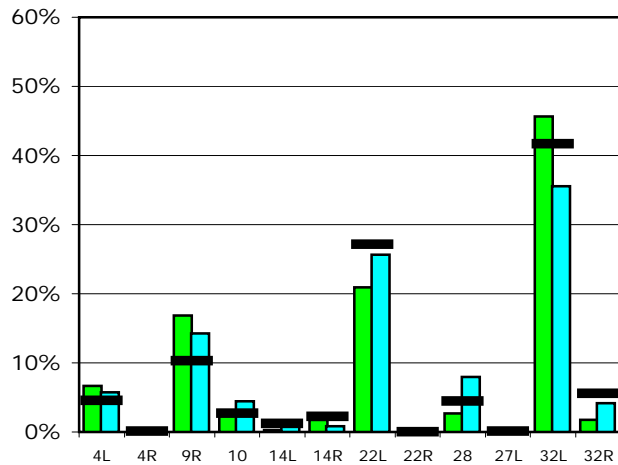
Runway Use (10 p.m. to 7 a.m.)

Source: Airport Noise Management System (ANMS)

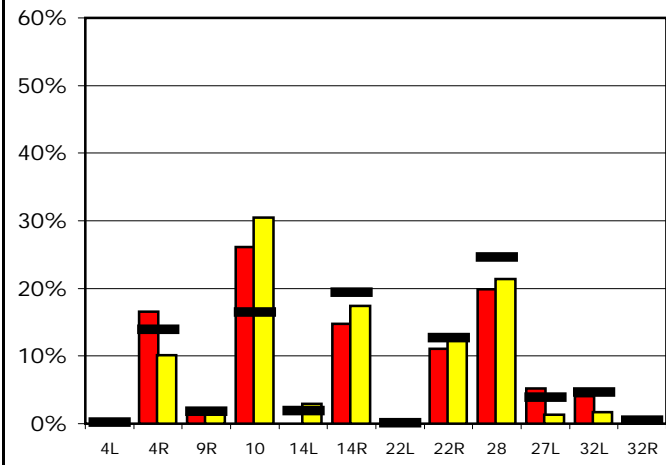
Runway Utilization

	4L	4R	9R	10	14L	14R	22L	22R	28	27L	32L	32R
Average Daily Departures												
May 2008	6	0	15	3	0	2	19	0	2	0	42	2
April 2008	6	0	15	5	1	1	26	0	8	0	36	4
12 Month Avg.	5	0	12	3	1	3	30	0	5	0	47	6
Average Daily Arrivals												
May 2008	0	21	2	33	0	19	0	14	25	7	5	1
April 2008	0	14	2	42	4	24	0	17	29	2	2	1
12 Month Avg.	0	20	3	24	3	28	0	18	36	6	7	1

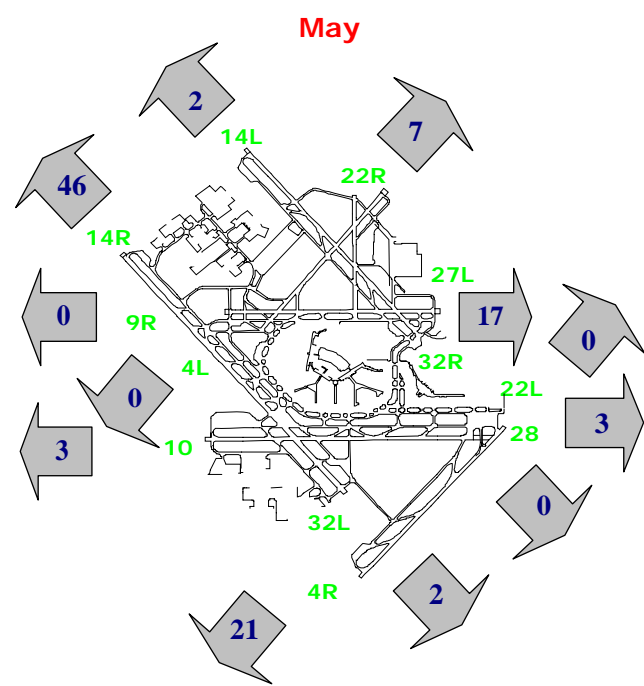
Departures (10 p.m. to 7 a.m.)



Arrivals (10 p.m. to 7 a.m.)



Percentage Departure Utilization



Percentage Arrival Utilization

