

# Runway Use Report

Chicago O'Hare International Airport

Period: March 2009

Time of Day: All hours



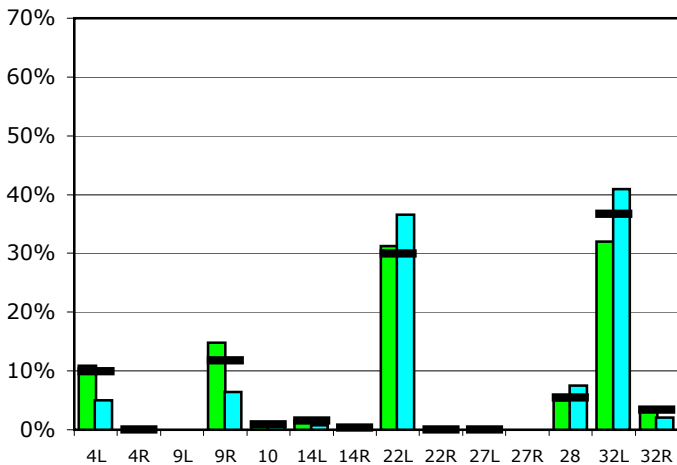
## Runway Use (All hours)

Source: Airport Noise Management System (ANMS)

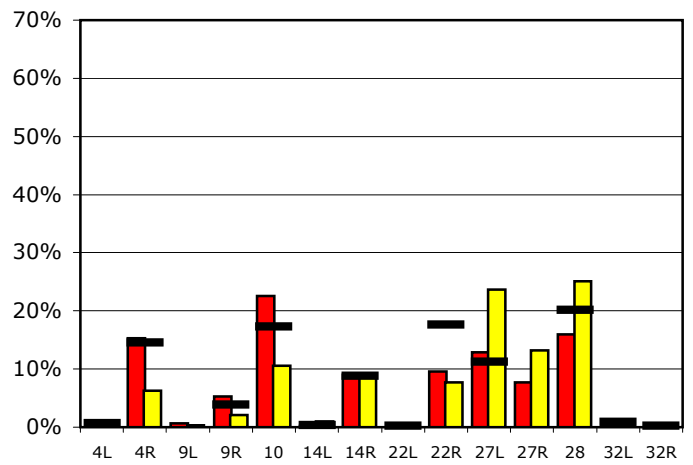
### Runway Utilization<sup>1</sup>

	4L	4R	9L	9R	10	14L	14R	22L	22R	27L	27R	28	32L	32R
<b>Average Daily Departures</b>														
<b>March 2009</b>	115	0	0	156	13	16	1	329	0	0	0	53	337	33
February 2009	52	0	0	66	6	8	1	375	0	0	0	77	419	22
12 Month Avg.	101	1	n/a	120	9	16	4	306	0	0	n/a	56	375	35
<b>Average Daily Arrivals</b>														
<b>March 2009</b>	0	170	8	59	250	3	100	5	107	143	85	177	3	1
February 2009	0	68	4	23	115	11	100	7	83	256	143	272	4	0
12 Month Avg.	7	155	n/a	41	185	4	94	2	189	120	n/a	216	10	3

## Departures (All hours)

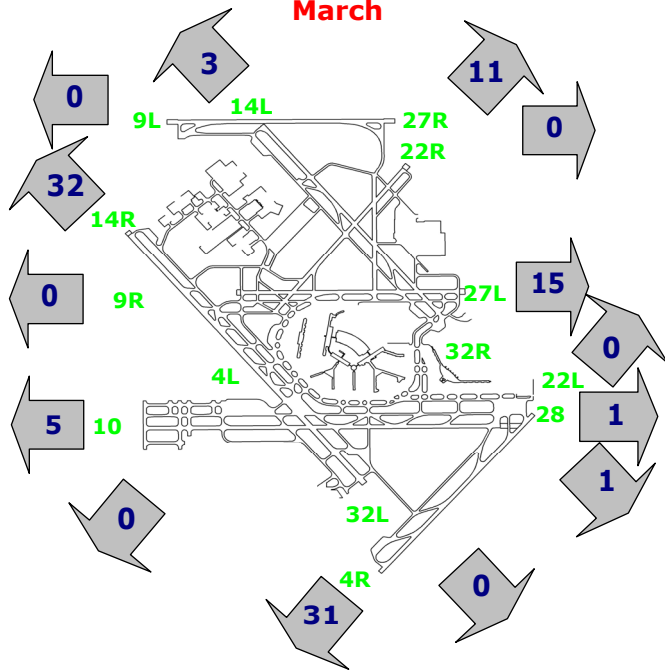


## Arrivals (All hours)



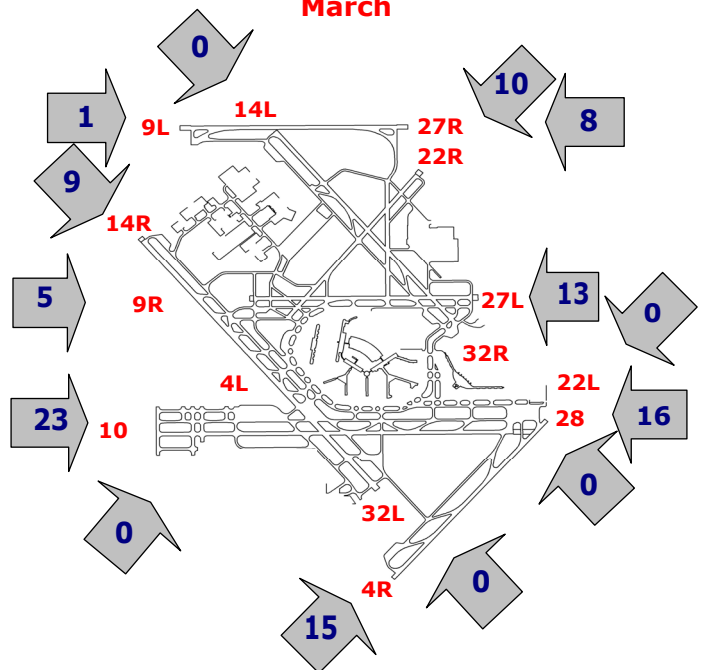
## Percentage Departure Utilization

March



## Percentage Arrival Utilization

March



<sup>1</sup> Runway 9L/27R was commissioned on November 20, 2008