

# Runway Use Report

Chicago O'Hare International Airport

Period: March 2009

Time of Day: 10:00 p.m. to 7:00 a.m.



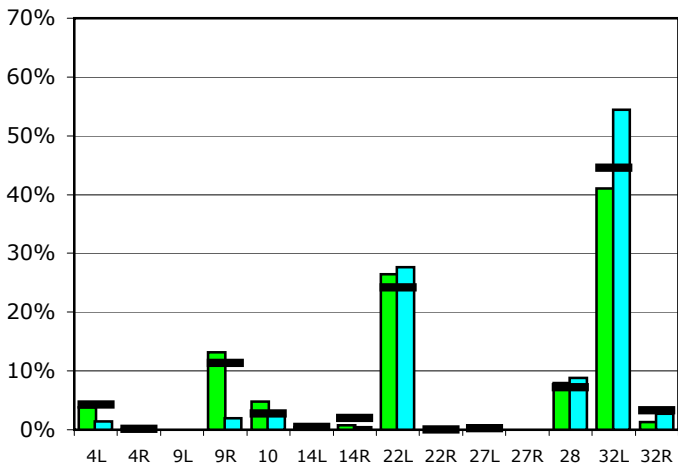
## Runway Use (10 p.m. to 7 a.m.)

Source: Airport Noise Management System (ANMS)

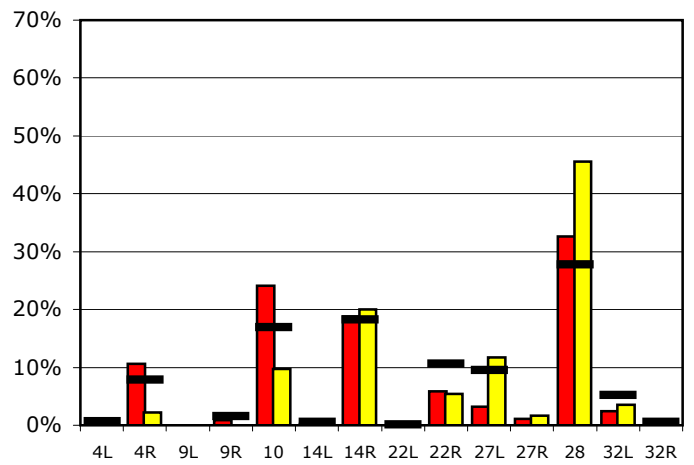
### Runway Utilization<sup>1</sup>

	4L	4R	9L	9R	10	14L	14R	22L	22R	27L	27R	28	32L	32R
<b>Average Daily Departures</b>														
March 2009	3	0	0	12	4	0	1	24	0	0	0	7	37	1
February 2009	1	0	0	2	2	0	0	23	0	0	0	7	45	2
12 Month Avg.	4	0	n/a	10	2	0	2	22	0	0	n/a	6	40	3
<b>Average Daily Arrivals</b>														
March 2009	0	13	0	1	29	0	23	0	7	4	1	39	3	0
February 2009	0	3	0	0	11	0	22	0	6	13	2	51	4	0
12 Month Avg.	1	9	n/a	2	20	1	21	0	12	11	n/a	32	6	1

### Departures (10 p.m. to 7 a.m.)

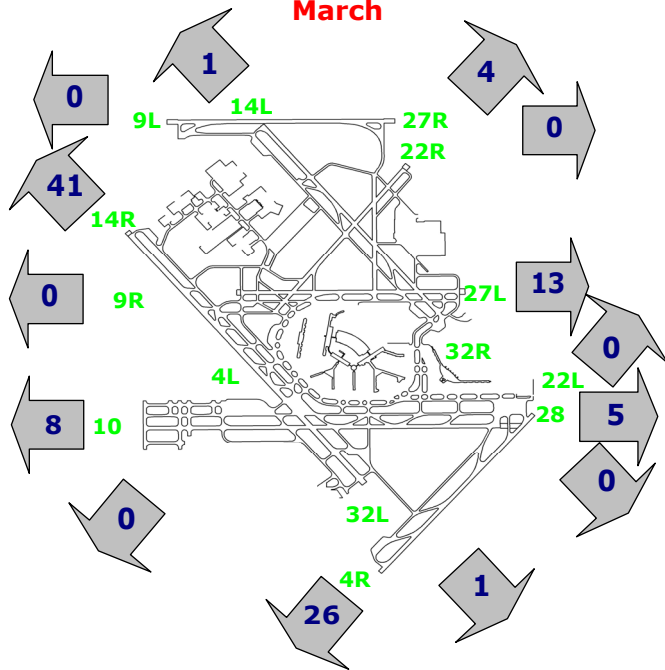


### Arrivals (10 p.m. to 7 a.m.)



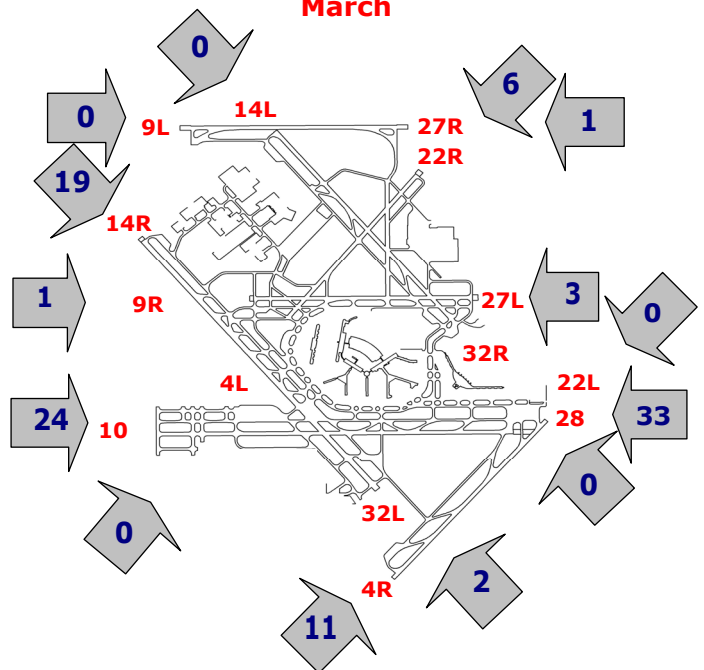
### Percentage Departure Utilization

March



### Percentage Arrival Utilization

March



<sup>1</sup> Runway 9L/27R was commissioned on November 20, 2008