

# Runway Use Report

Chicago O'Hare International Airport

Period: June 2009

Time of Day: All hours



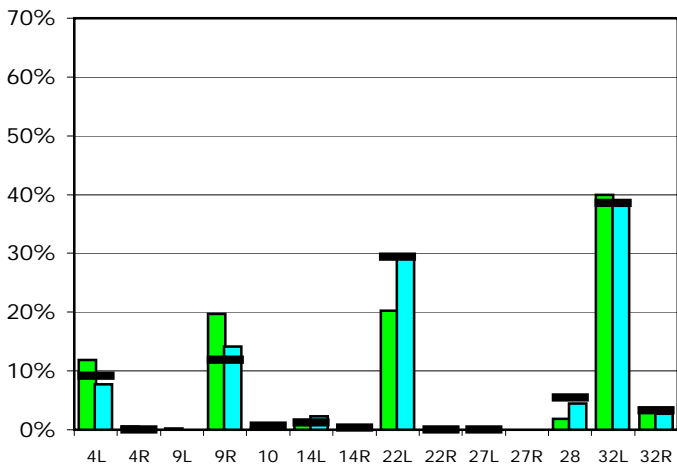
## Runway Use (All hours)

Source: Airport Noise Management System (ANMS)

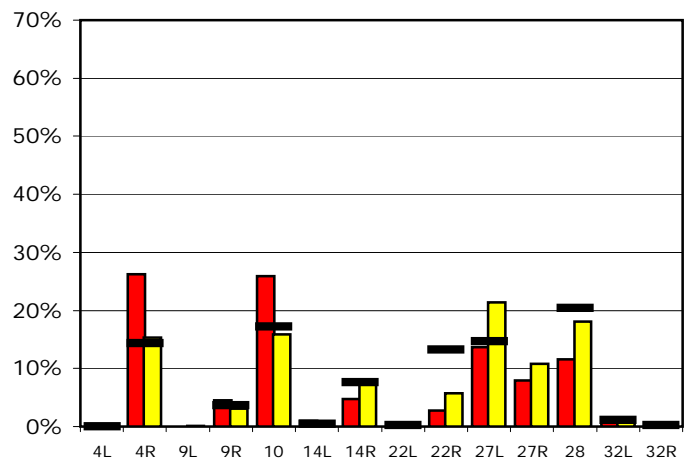
### Runway Utilization<sup>1</sup>

	4L	4R	9L	9R	10	14L	14R	22L	22R	27L	27R	28	32L	32R
<b>Average Daily Departures</b>														
June 2009	128	6	2	212	3	15	4	217	0	0	0	20	429	37
May 2009	81	0	0	149	4	24	6	308	0	0	0	47	399	28
12 Month Avg.	106	1	n/a	137	8	14	4	340	0	0	n/a	63	446	38
<b>Average Daily Arrivals</b>														
June 2009	0	300	0	52	295	12	55	0	31	155	91	133	17	1
May 2009	0	169	1	34	175	4	82	1	63	235	119	199	16	0
12 Month Avg.	0	175	n/a	44	209	5	92	3	161	178	n/a	247	13	3

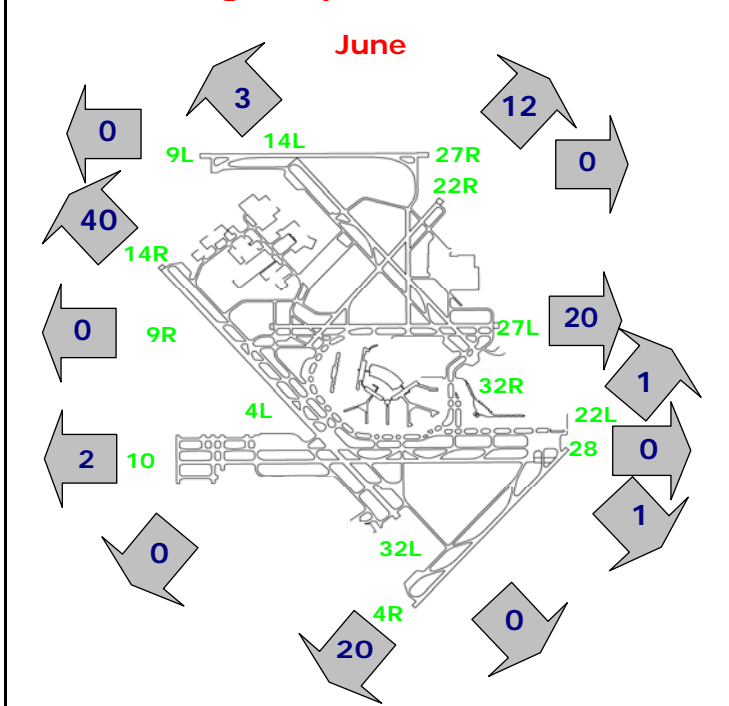
## Departures (All hours)



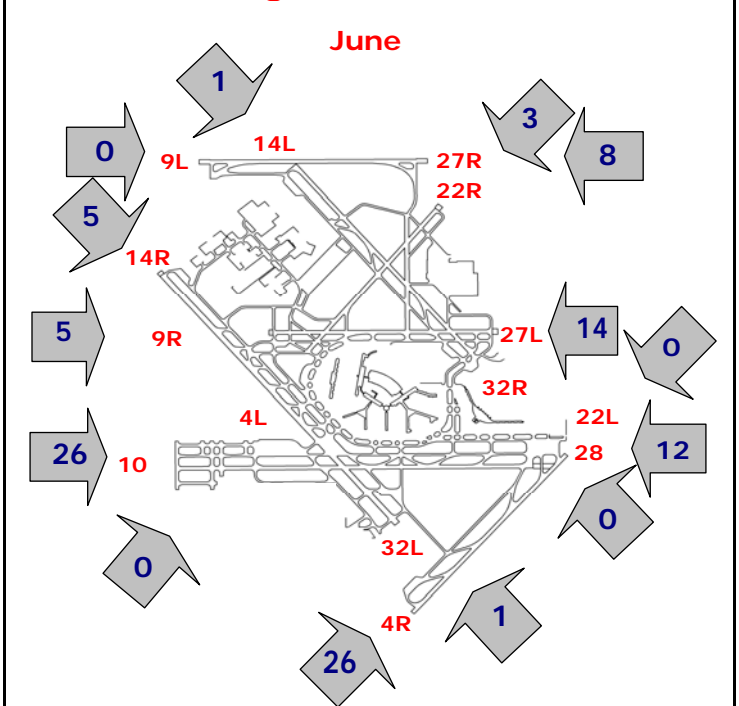
## Arrivals (All hours)



## Percentage Departure Utilization



## Percentage Arrival Utilization



<sup>1</sup> Runway 9L/27R was commissioned on November 20, 2008