

Runway Use Report

Chicago O'Hare International Airport

Period: June 2009

Time of Day: 10:00 p.m. to 7:00 a.m.



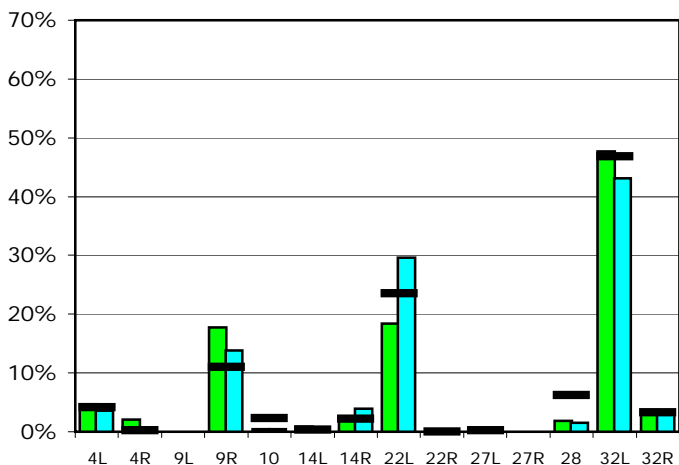
Runway Use (10 p.m. to 7 a.m.)

Source: Airport Noise Management System (ANMS)

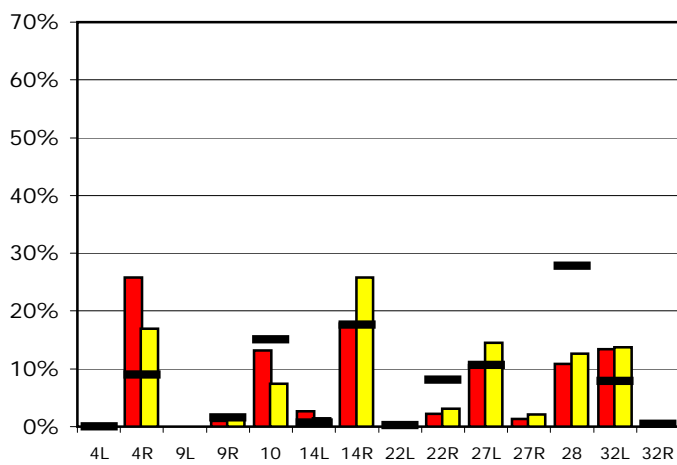
Runway Utilization¹

	4L	4R	9L	9R	10	14L	14R	22L	22R	27L	27R	28	32L	32R
Average Daily Departures														
June 2009	4	2	0	17	0	1	2	18	0	0	0	2	46	4
May 2009	3	0	0	12	0	0	3	25	0	0	0	1	37	3
12 Month Avg.	4	0	n/a	11	2	0	2	24	0	0	n/a	6	49	3
Average Daily Arrivals														
June 2009	0	32	0	1	17	3	22	0	3	13	2	14	17	1
May 2009	0	20	0	2	9	2	31	1	4	17	3	15	16	0
12 Month Avg.	0	12	n/a	2	20	1	24	0	11	14	n/a	37	10	1

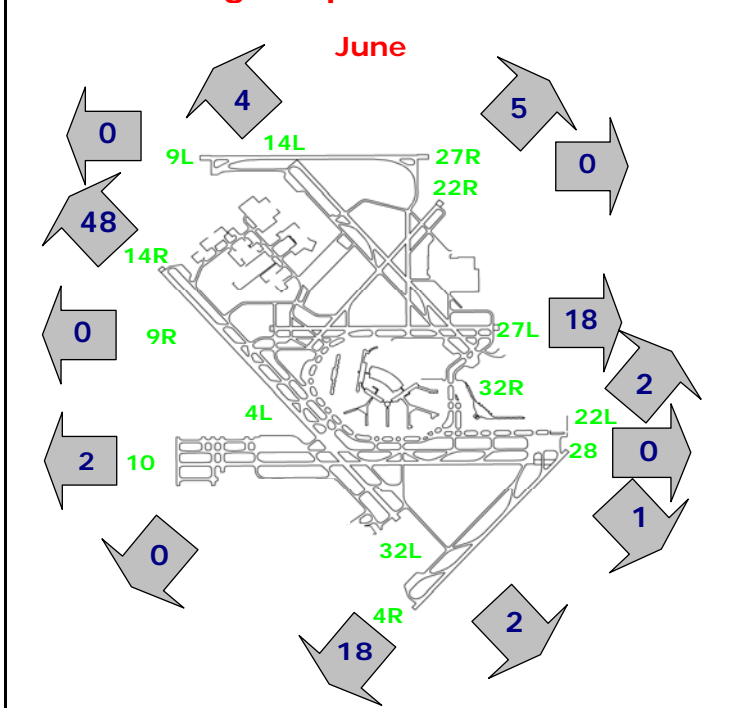
Departures (10 p.m. to 7 a.m.)



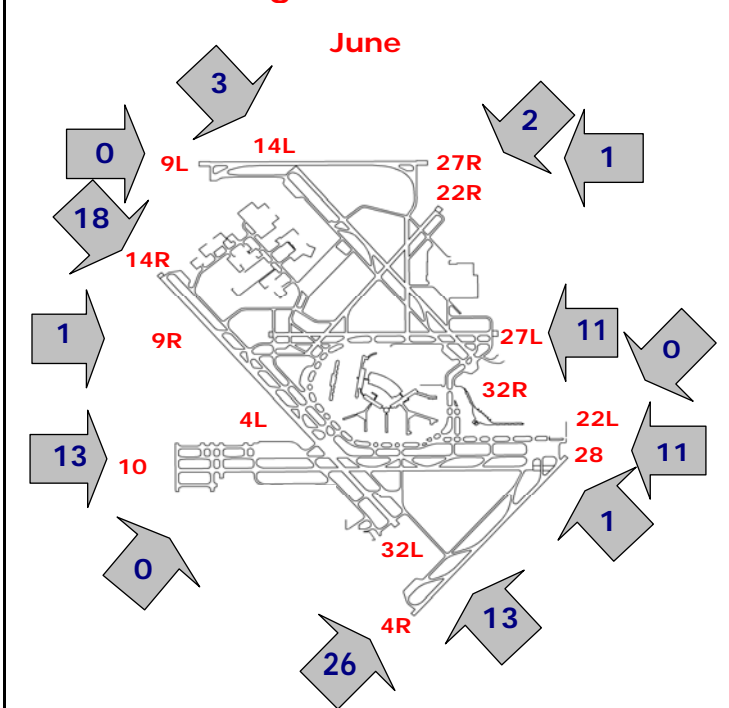
Arrivals (10 p.m. to 7 a.m.)



Percentage Departure Utilization



Percentage Arrival Utilization



¹ Runway 9L/27R was commissioned on November 20, 2008