

# Runway Use Report

Chicago O'Hare International Airport

Period: January 2009

Time of Day: All hours



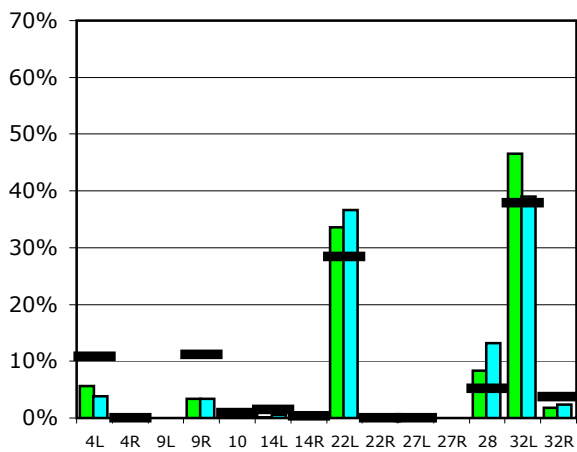
## Runway Use (All hours)

Source: Airport Noise Management System (ANMS)

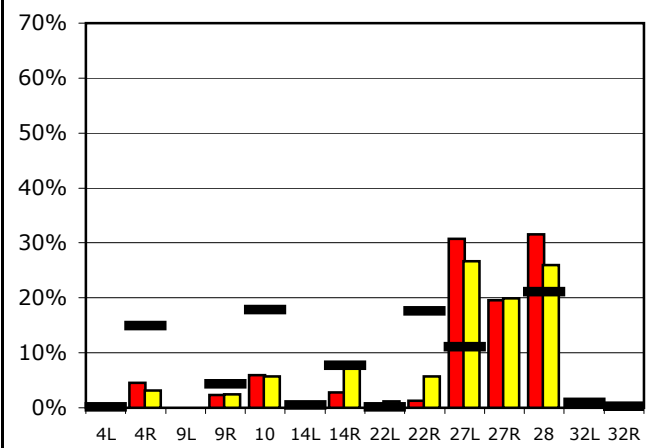
### Runway Utilization<sup>1</sup>

		4L	4R	9L	9R	10	14L	14R	22L	22R	27L	27R	28	32L	32R
<b>Average Daily Departures</b>															
January 2009	<span style="color: green;">■</span>	56	0	0	33	5	2	1	337	0	1	0	83	467	18
December 2008	<span style="color: cyan;">■</span>	38	0	0	33	6	6	2	367	0	2	0	133	390	24
12 Month Avg.	<span style="color: black;">■</span>	120	0	n/a	124	10	16	4	316	0	1	n/a	57	421	41
<b>Average Daily Arrivals</b>															
January 2009	<span style="color: red;">■</span>	0	47	0	24	62	6	29	1	13	321	204	329	5	0
December 2008	<span style="color: yellow;">■</span>	0	33	0	26	59	9	78	12	59	278	207	270	5	4
12 Month Avg.	<span style="color: black;">■</span>	2	172	n/a	50	206	5	90	1	204	128	n/a	244	11	3

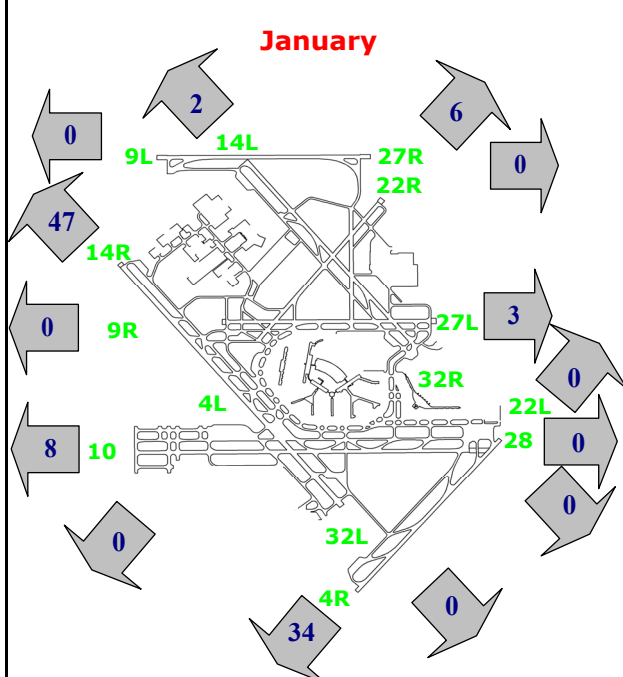
## Departures (All hours)



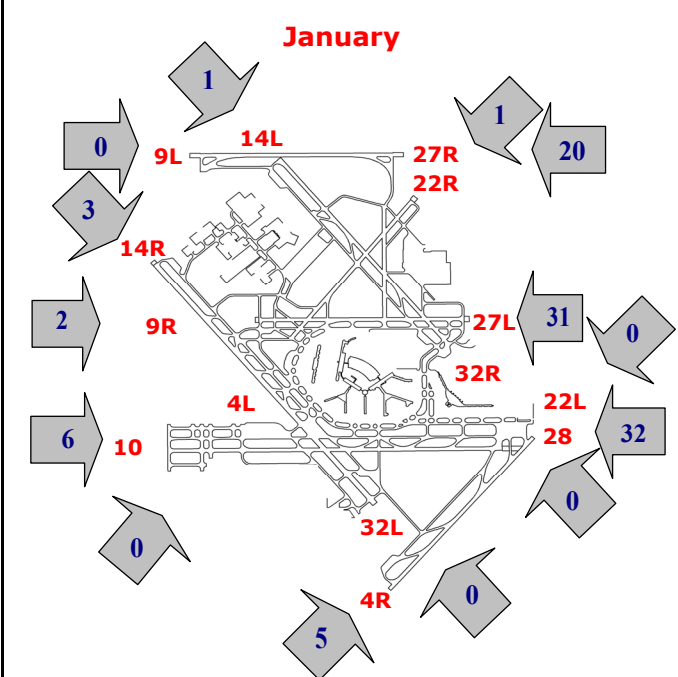
## Arrivals (All hours)



## Percentage Departure Utilization



## Percentage Arrival Utilization



<sup>1</sup> Runway 9L/27R was commissioned on November 20, 2008