

# Runway Use Report

Chicago O'Hare International Airport

Period: February 2009

Time of Day: All hours



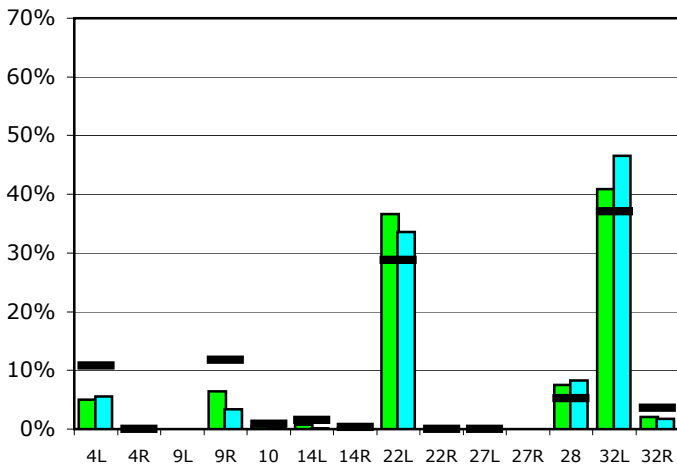
## Runway Use (All hours)

Source: Airport Noise Management System (ANMS)

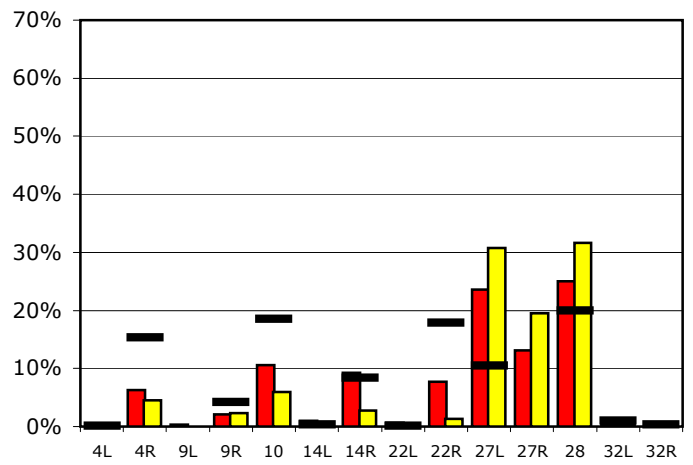
### Runway Utilization<sup>1</sup>

	4L	4R	9L	9R	10	14L	14R	22L	22R	27L	27R	28	32L	32R
<b>Average Daily Departures</b>														
<b>February 2009</b>	52	0	0	66	6	8	1	375	0	0	0	77	419	22
January 2009	56	0	0	33	5	2	1	337	0	1	0	83	467	18
12 Month Avg.	111	0	n/a	122	9	16	4	296	0	1	n/a	53	381	37
<b>Average Daily Arrivals</b>														
<b>February 2009</b>	0	68	4	23	115	11	100	7	83	256	143	272	4	0
January 2009	0	47	0	24	62	6	29	1	13	321	204	329	5	0
12 Month Avg.	1	166	n/a	45	199	4	90	2	193	113	n/a	215	10	3

## Departures (All hours)

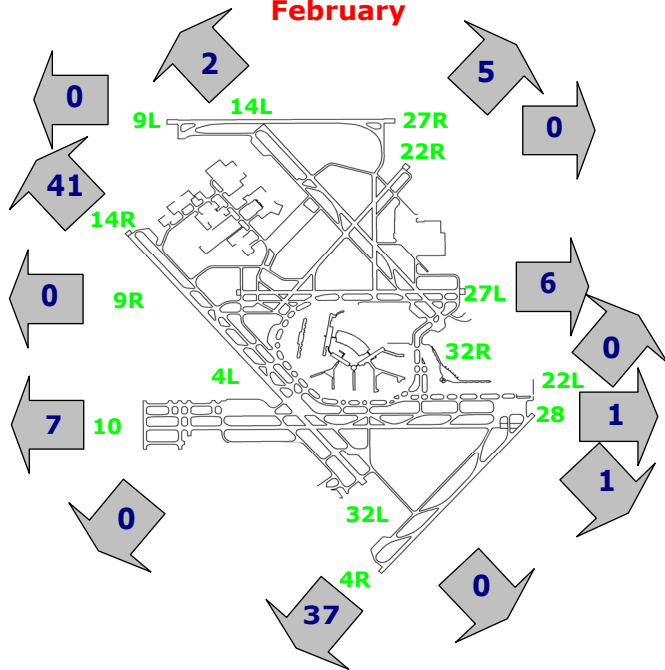


## Arrivals (All hours)



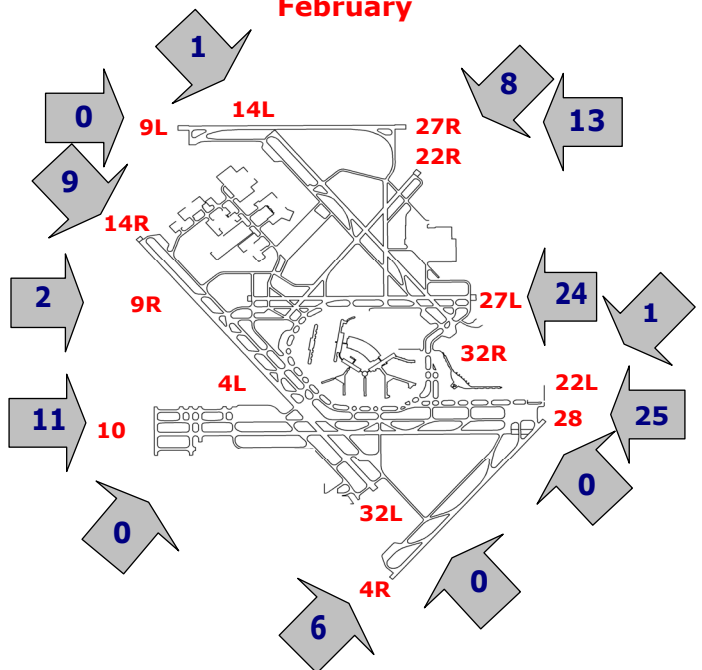
## Percentage Departure Utilization

February



## Percentage Arrival Utilization

February



<sup>1</sup> Runway 9L/27R was commissioned on November 20, 2008