

# Runway Use Report

Chicago O'Hare International Airport

Period: February 2009

Time of Day: 10:00 p.m. to 7:00 a.m.



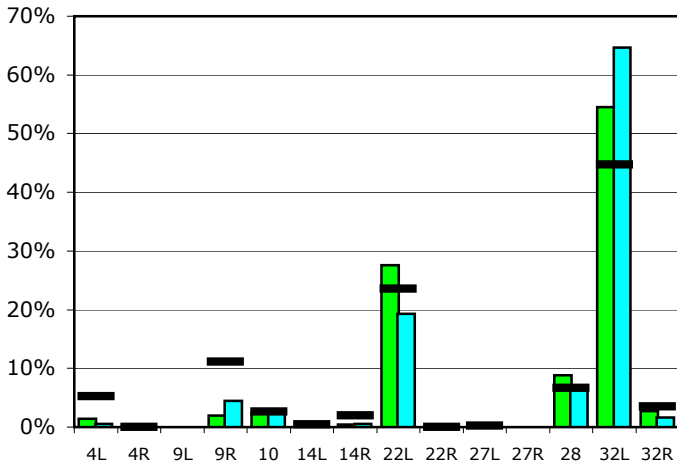
## Runway Use (10 p.m. to 7 a.m.)

Source: Airport Noise Management System (ANMS)

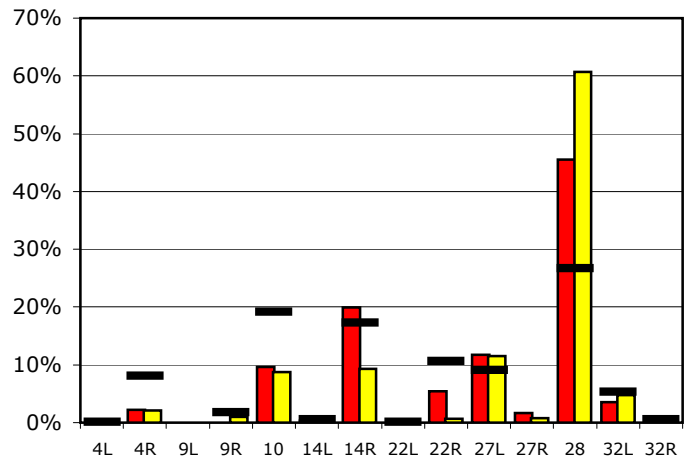
### Runway Utilization<sup>1</sup>

	4L	4R	9L	9R	10	14L	14R	22L	22R	27L	27R	28	32L	32R
<b>Average Daily Departures</b>														
February 2009	1	0	0	2	2	0	0	23	0	0	0	7	45	2
January 2009	0	0	0	3	2	0	0	15	0	0	0	5	50	1
12 Month Avg.	5	0	n/a	10	2	0	2	21	0	0	n/a	6	41	3
<b>Average Daily Arrivals</b>														
February 2009	0	3	0	0	11	0	22	0	6	13	2	51	4	0
January 2009	0	2	0	1	8	0	9	0	1	11	1	57	5	0
12 Month Avg.	0	10	n/a	2	23	1	20	0	13	11	n/a	31	6	1

### Departures (10 p.m. to 7 a.m.)

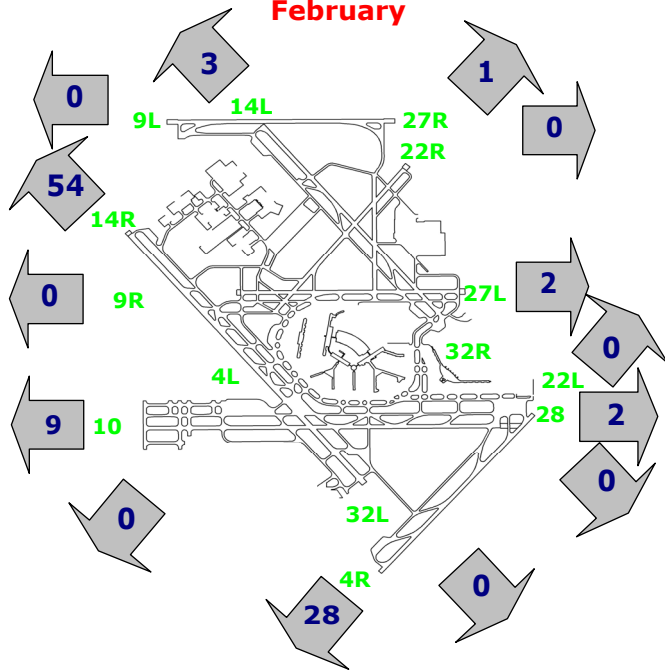


### Arrivals (10 p.m. to 7 a.m.)



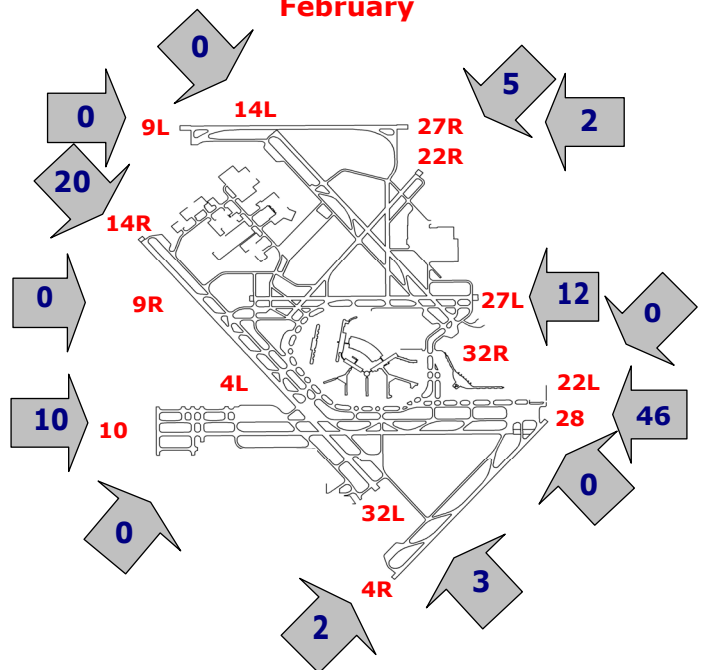
### Percentage Departure Utilization

February



### Percentage Arrival Utilization

February



<sup>1</sup> Runway 9L/27R was commissioned on November 20, 2008