

Runway Use Report

Chicago O'Hare International Airport

Period: December 2008

Time of Day: 10:00 p.m. to 7:00 a.m.



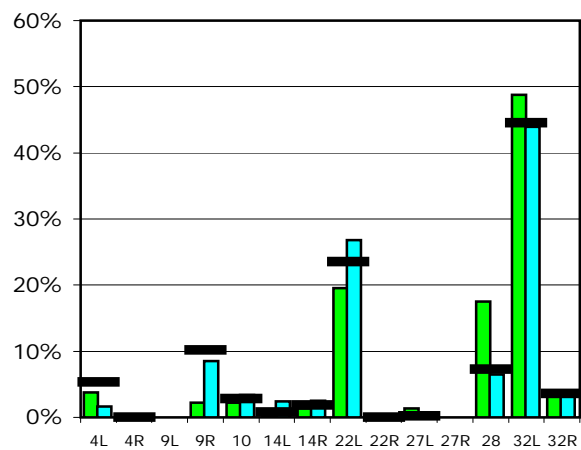
Runway Use (10 p.m. to 7 a.m.)

Source: Airport Noise Management System (ANMS)

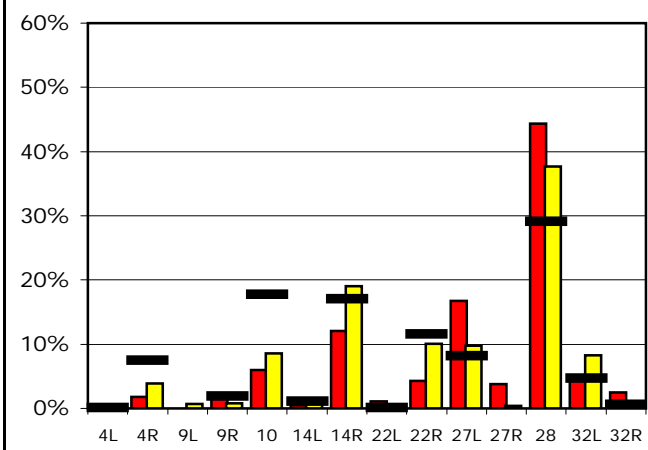
Runway Utilization¹

		4L	4R	9L	9R	10	14L	14R	22L	22R	27L	27R	28	32L	32R
Average Daily Departures															
December 2008	■	4	0	0	2	2	0	1	20	0	1	0	18	49	3
November 2008	■	1	0	0	7	3	2	2	22	0	0	0	5	36	3
12 Month Avg.	■	5	0	n/a	10	3	1	2	23	0	0	n/a	7	44	4
Average Daily Arrivals															
December 2008	■	0	2	0	2	7	1	13	1	5	18	4	48	5	3
November 2008	■	0	4	1	1	9	1	20	0	11	10	0	40	9	0
12 Month Avg.	■	0	9	n/a	2	22	1	21	0	14	10	n/a	36	6	1

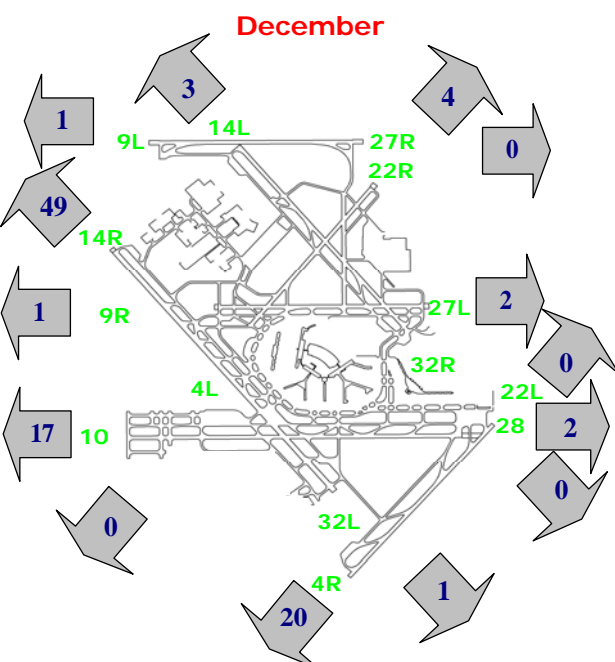
Departures (10 p.m. to 7 a.m.)



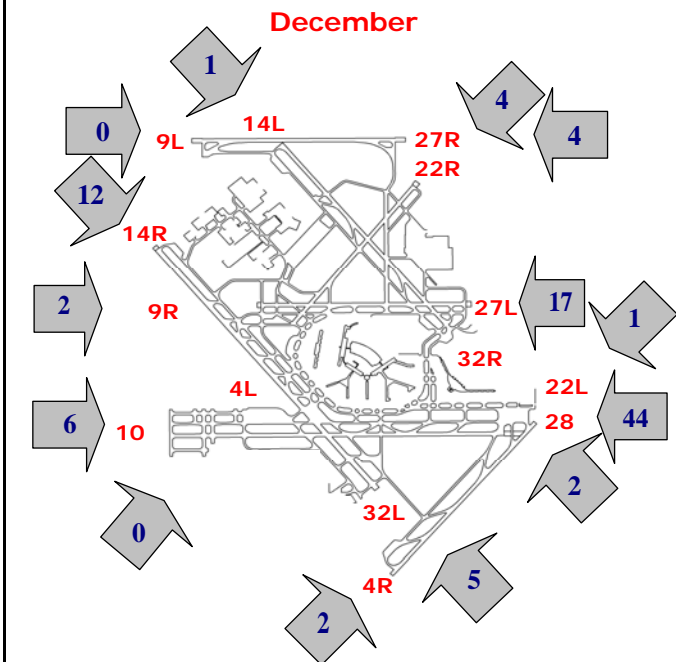
Arrivals (10 p.m. to 7 a.m.)



Percentage Departure Utilization



Percentage Arrival Utilization



¹ Runway 9L/27R was commissioned on November 20, 2008