

# Runway Use Report

Chicago O'Hare International Airport

Period: August 2008

Time of Day: 10:00 p.m. to 7:00 a.m.



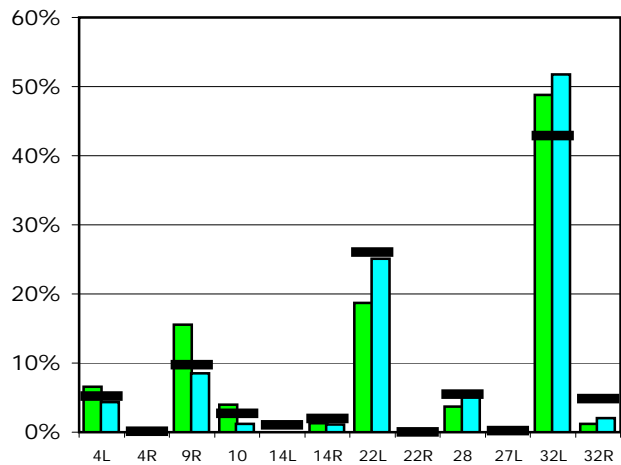
## Runway Use (10 p.m. to 7 a.m.)

Source: Airport Noise Management System (ANMS)

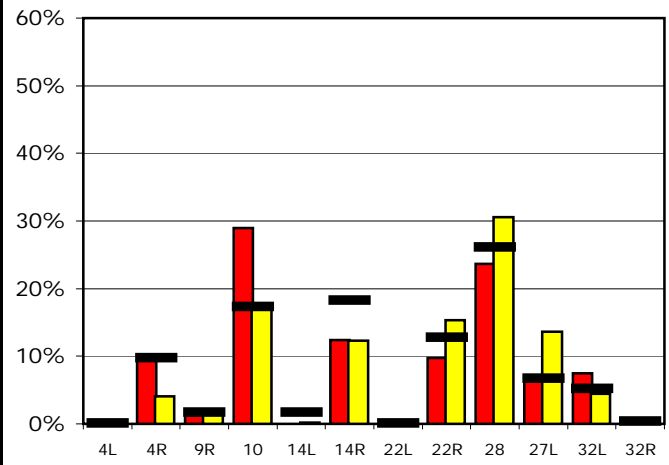
### Runway Utilization

	4L	4R	9R	10	14L	14R	22L	22R	28	27L	32L	32R
<b>Average Daily Departures</b>												
August 2008	8	0	19	5	0	2	23	0	4	0	59	1
July 2008	5	0	10	1	0	1	29	0	7	0	59	2
12 Month Avg.	6	0	11	3	1	2	29	0	6	0	47	5
<b>Average Daily Arrivals</b>												
August 2008	0	16	2	49	0	21	0	16	40	12	13	0
July 2008	0	6	2	25	0	18	0	22	44	19	6	0
12 Month Avg.	0	14	2	25	2	26	0	18	37	10	7	1

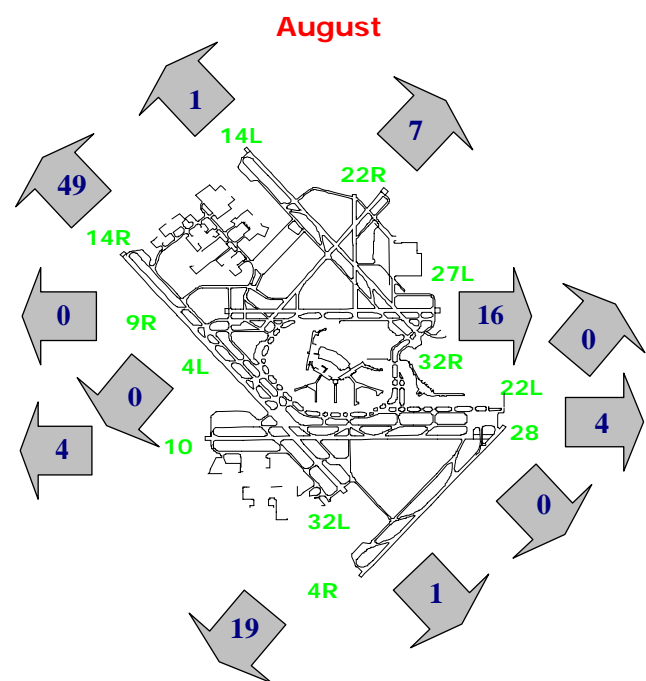
### Departures (10 p.m. to 7 a.m.)



### Arrivals (10 p.m. to 7 a.m.)



### Percentage Departure Utilization



### Percentage Arrival Utilization

